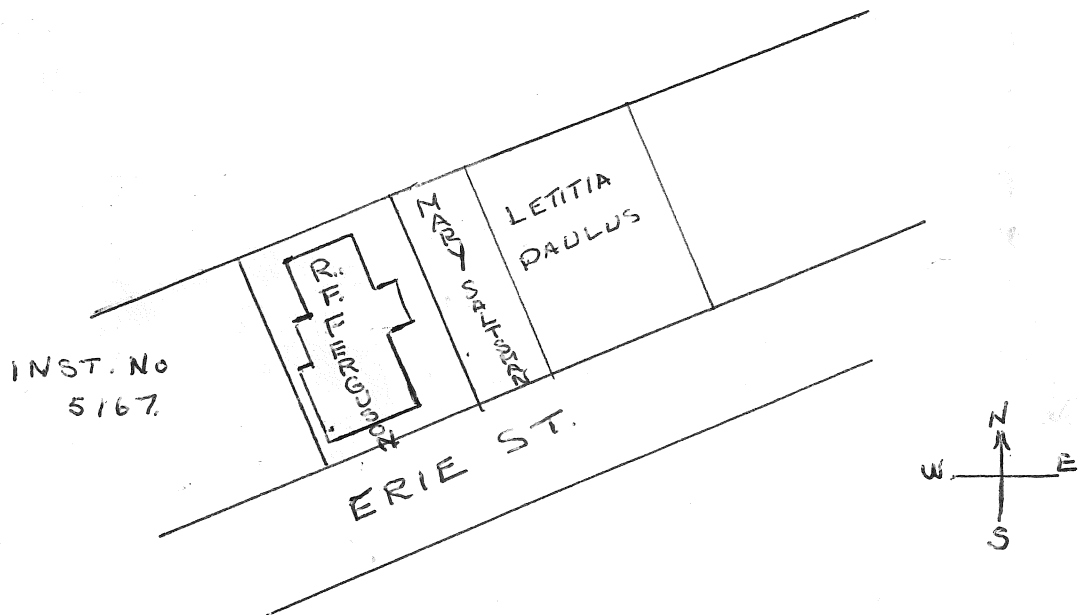


THE FERGUSON HOME::: ERIE ST. FORT ERIE.

This large frame home, was built by a Mr. Beckwith and stood on the north side of Erie St. at the west end. Shortly after the start of the Peace Bridge , Mr. R. F. Ferguson who owned a General Store in the south end by the Ferry landing moved this home across the street to the sight of the Mill Race. It stood just east of the old Rough cast home. He moved from this place shortly after and rented it, until it was sold the the Peace Bridge Comp. in the early 40's. It was bought by Wm. Hawley and moved to it's present location on the north side of Upper Avinia.

Outwardly the building remains much the same , except for the side verandah which has been enclosed.

Information: Pearl Kee.



ERIE ST.::: fort Erie, West side . before 1900's.

RICHARD F. FERGUSON::: built by a Mr. Beckwith: sold to a Mr. Martin : sold to R.F. Ferguson. Moved in 1926 to the sight of the Mill Race, directly across the st. sold to Wm. Hawley, 190

JEROME JANSEN :::

Frame two story home built by carpenter, Jerome Jansen, shortly before his marriage to Florence Paulus. Sold to the Ed. Burger family. ^{Mary Soltzman} Removed 1926, relocated on the north side of Princess St., four houses from the corner of Archange

PAULUS :::

built in 1819. Purchased by Daniel Paulus and given to his son David when he married Letitia Sabine. Lived in by members of the Paulus family from 1880-1925. "Riverview" Home was removed at the time the Peace Bridge was being constructed.

Information from Pearl Kee and Mrs. Reid
Fort Erie.