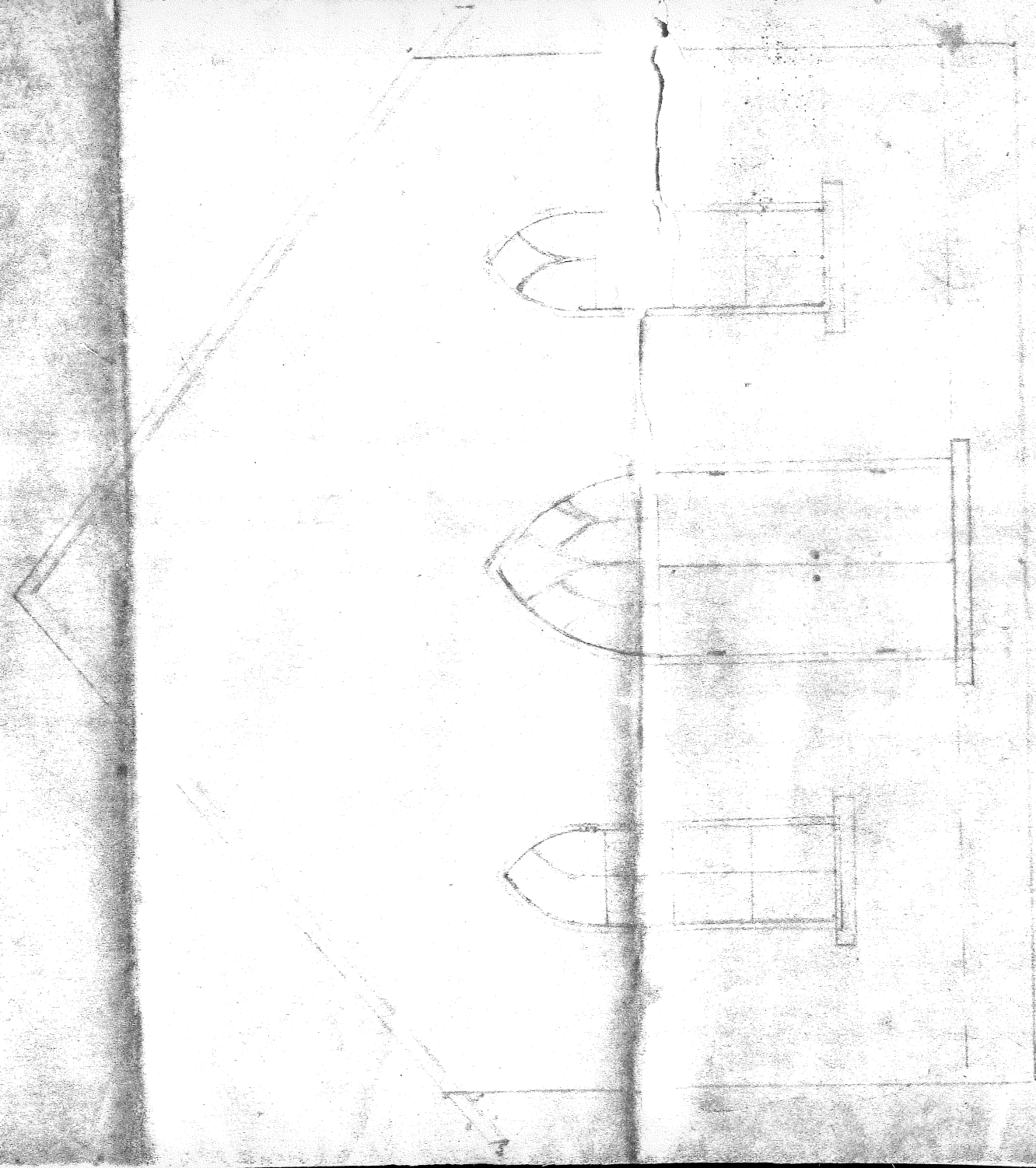


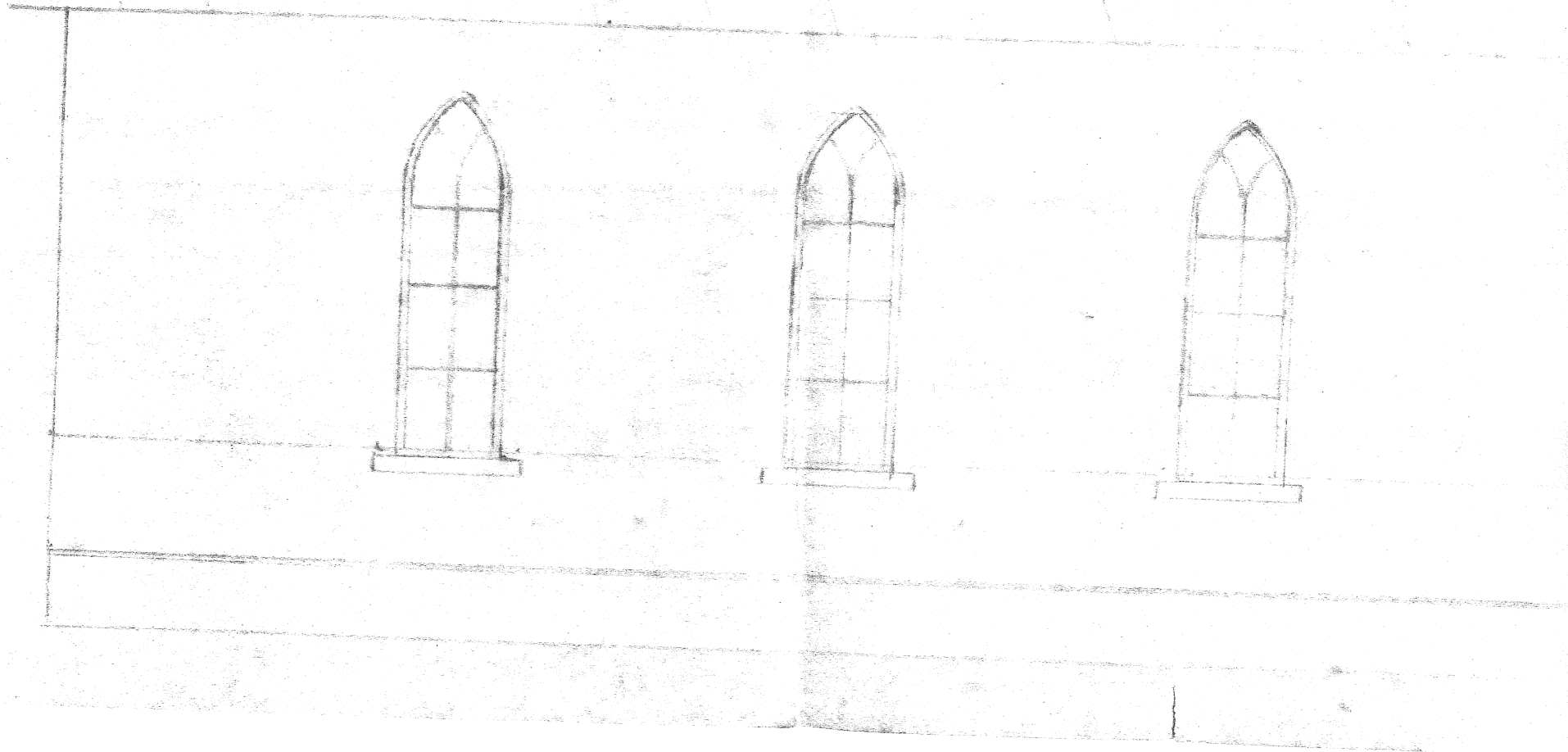
Fig. 1
Fig. 1



PLANS FOR THE METHODIST CHURCH --
CARPENTRY ~~built~~ by Mr. Thomas Rainey

1876

Figure 2



2m

Outside

"

Square Outside

side

ft. 6 in

"

6 in

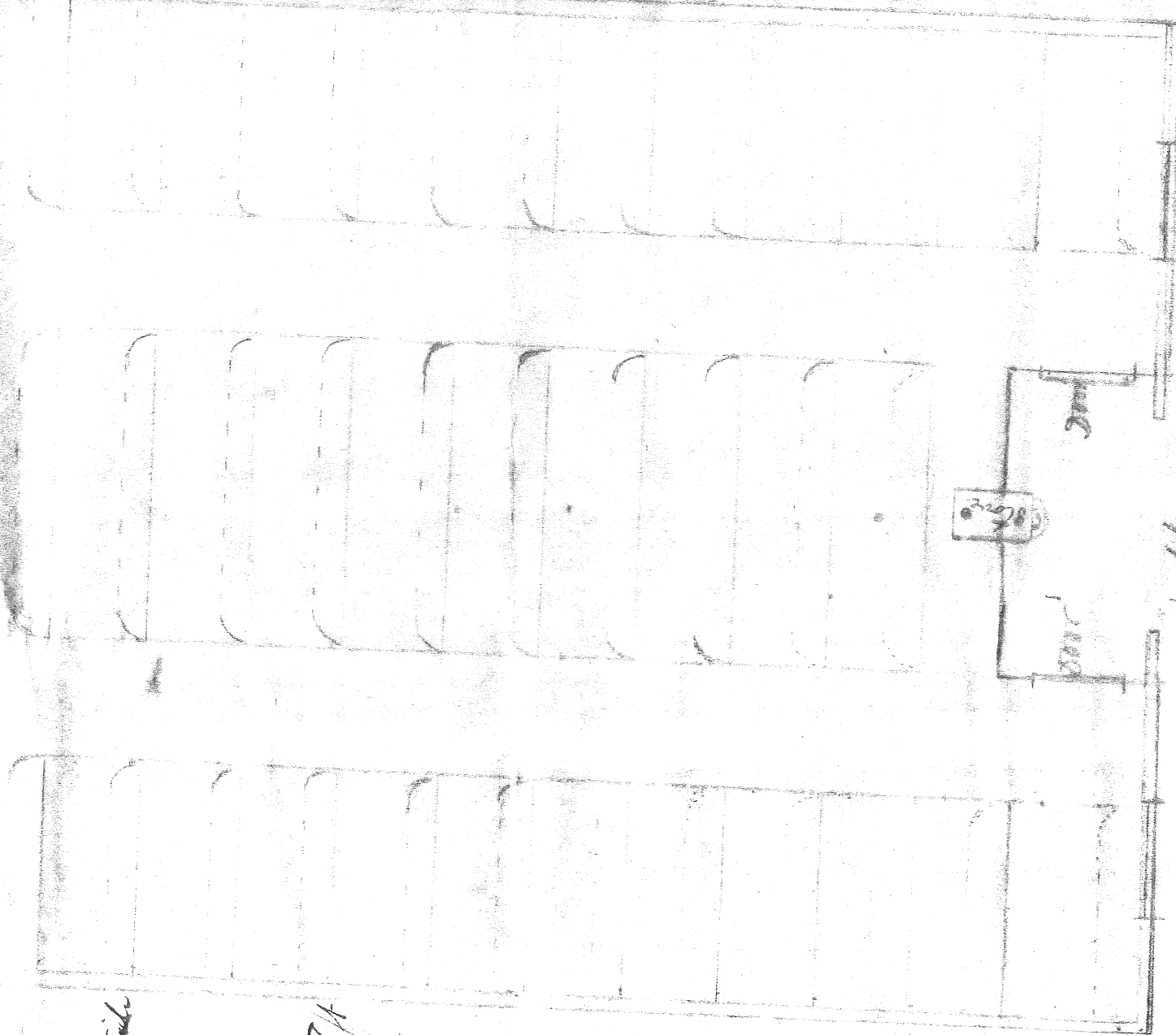
2" X 8"

4-Side

with

Additional

apart



Lobby