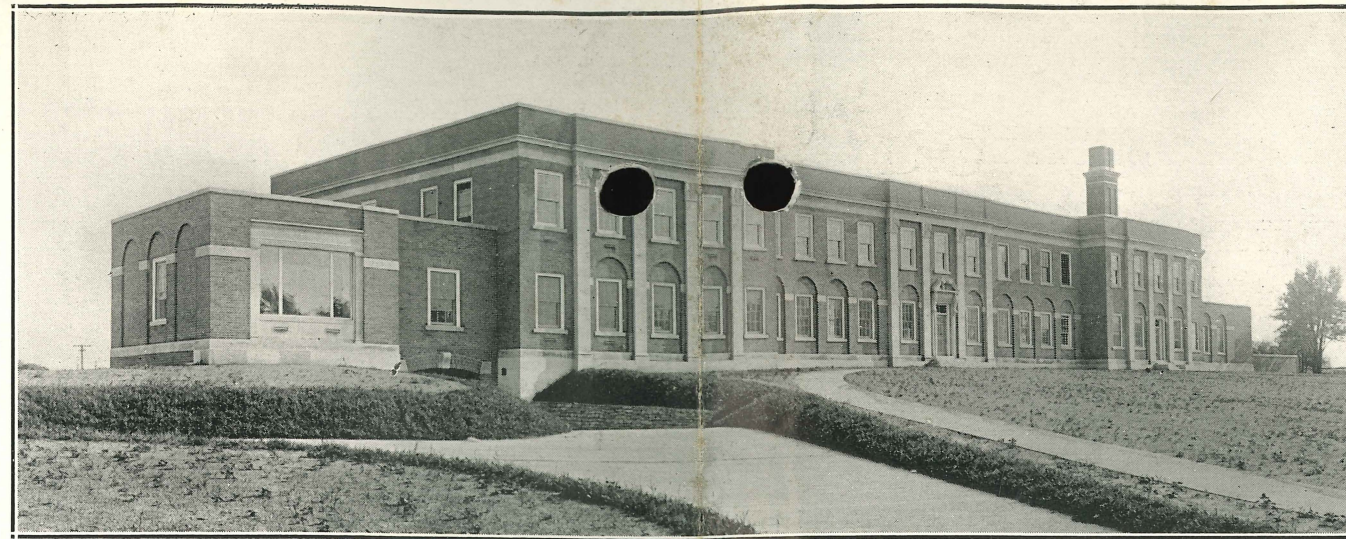


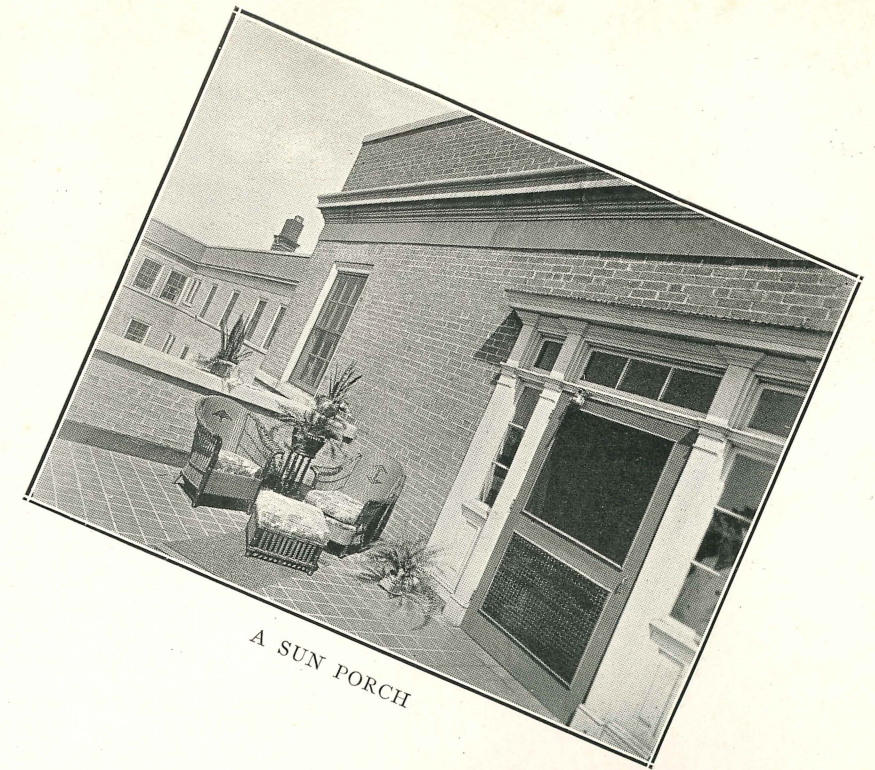
DOUGLAS MEMORIAL HOSPITAL
FORT ERIE, ONTARIO, CANADA





DOUGLAS MEMORIAL HOSPITAL

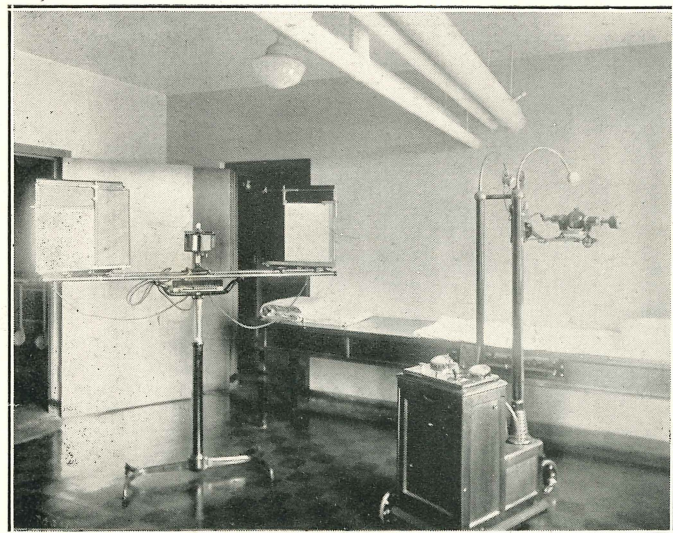
FORT ERIE, ONTARIO



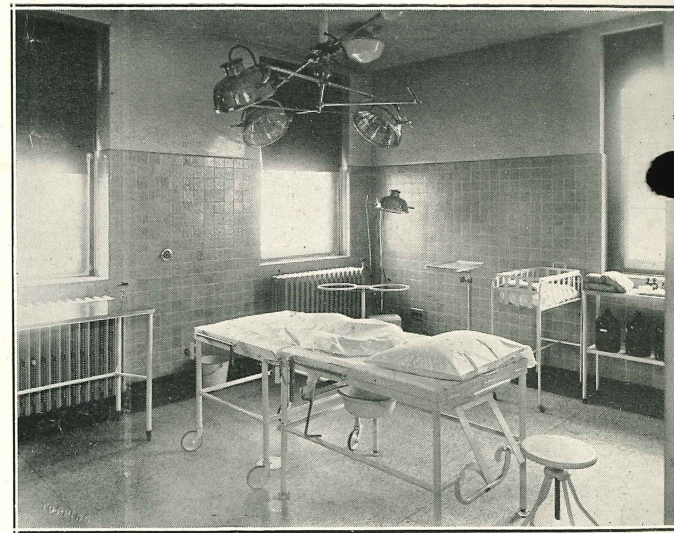
A SUN PORCH



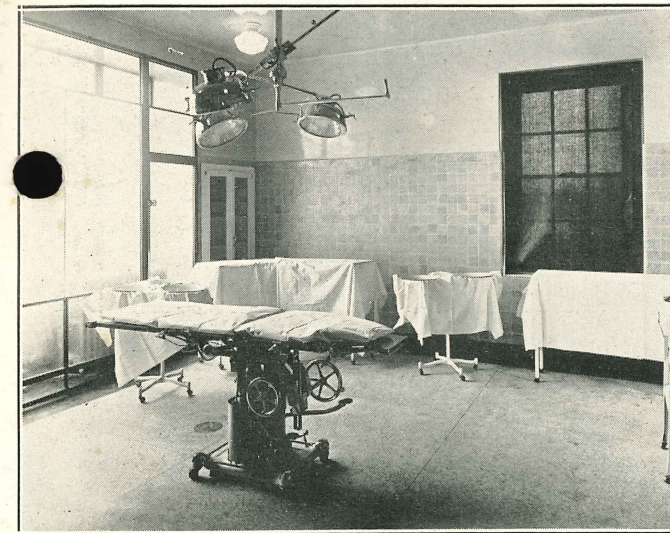
BOARD ROOM



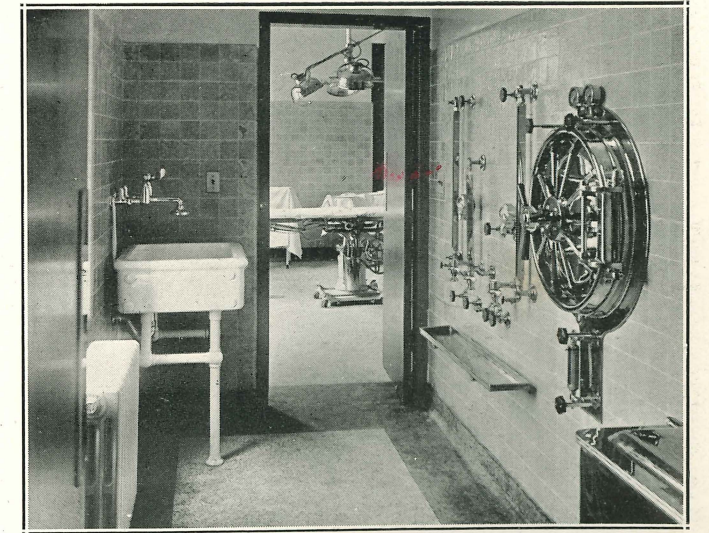
X-RAY DEPARTMENT



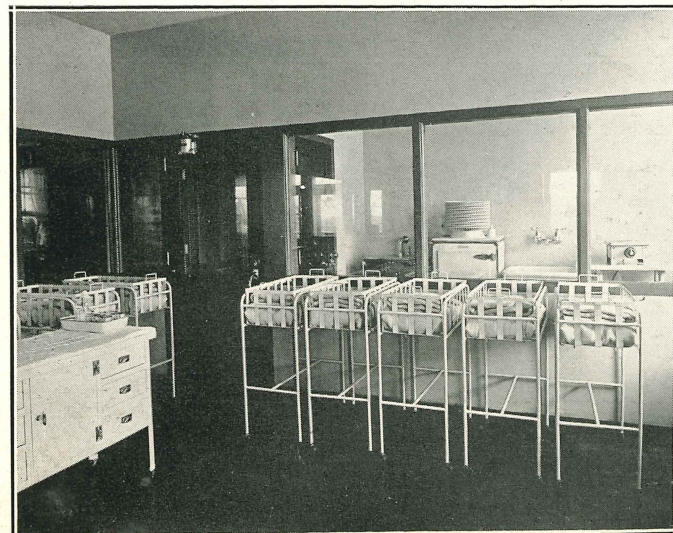
OBSTETRICAL DEPARTMENT



OPERATING ROOM



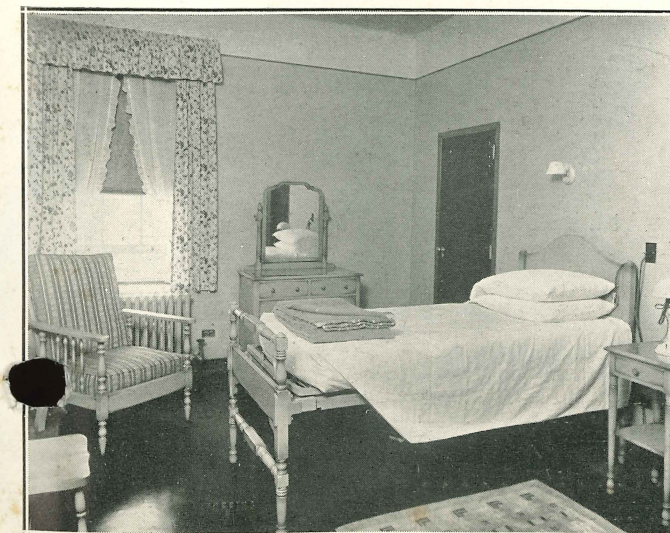
STERILIZING DEPARTMENT



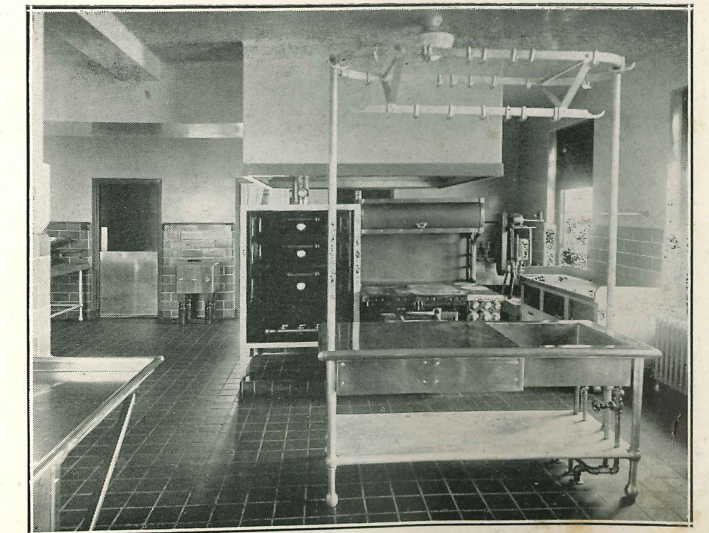
NURSERY



A PUBLIC WARD



A PRIVATE ROOM



KITCHEN

COL. L. CLARKE RAYMOND, K.C.
President and Chairman of the Board

A. D. NIE, *Vice-President*

H. P. O'SHEA, *Treasurer*



DOUGLAS MEMORIAL HOSPITAL

TRUSTEES

COLONEL L. CLARKE RAYMOND, K.C.
DR. GEORGE S. STANILAND H. S. SPRAGUE WILLIAM G. ATHOE
WILLIAM J. HAWLEY HOWARD P. O'SHEA J. G. MORNINGSTAR
ALBERT D. NIE FRANK E. BENNER KENNETH ELLSWORTH
WILLIAM F. WILLSON H. M. HERSHEY CARL TEAL

HOSPITAL COMMITTEE

DR. GEORGE S. STANILAND, *Chairman*
ALBERT D. NIE WILLIAM F. WILLSON
WILLIAM J. HAWLEY HOWARD P. O'SHEA

MEDICAL STAFF

DR. J. B. BUELL
DR. J. W. BUTTERS
DR. A. COLLINS
DR. WILFRED DERBYSHIRE
DR. J. R. MENCKE
DR. T. W. O'MULVENNY
DR. W. R. STACKHOUSE
DR. G. R. STEWART
DR. C. W. STREETS

MRS. HELEN C. JONES, R.N.
Superintendent

FORT ERIE, ONTARIO

We wish to bring to your attention this beautiful new Hospital which was built from funds generously given by the late Dr. Douglas, who practiced medicine in Fort Erie for over 50 years.

The Hospital affords excellent care for convalescent patients, and is situated in an ideal location on six acres of land high above the River level.

The institution is staffed entirely by graduate nurses and a trained dietitian who computes all diets.

It is a general Hospital, having a very modern Operating Room, X-Ray Department, Laboratories, Obstetrical Department, and equipped to take care of surgical, medical, emergency and obstetrical patients.

Our private rooms are most attractively furnished with coloured Stickley furniture. Each private room has its own toilet, wash basin, and a large clothes closet, while all the rooms, private, semi-private, and general wards face south.

Our rates are as follows:

Private	\$5.00 per day
Semi-Private (2 beds only)	3.00 per day
Wards	2.00 per day

You are cordially invited to visit and inspect this Hospital.

We are,

Yours very sincerely,

DOUGLAS MEMORIAL HOSPITAL

per. *H. C. Jones*
Superintendent