

GEO. MILLER & SONS  
HILLCREST DAIRY



Milk and Cream

BRIDGEBURG

PHONE  
61-R2

ONTARIO

S.E. CR. BRIDGEMOUNT - BOWEN

NOTICE

Lichtenberger's Dairy

Will Have NO DELIVERY on  
Christmas Day and New Year's Day -

Please get Two Days' Supply  
the day before each holiday

1945

Maple Grove Dairy

HENRY - FRED MILLER W.S. SPIT ROCK + BOWEN  
(BRIDGE)



MAPLE GROVE DAIRY

H. MILLER & SONS Props.

Milk and Cream

Bridgeburg

Ontario

1934

WE RECOMMEND

# FORT ERIE DAIRY

PASTEURIZED MILK  
CREAM

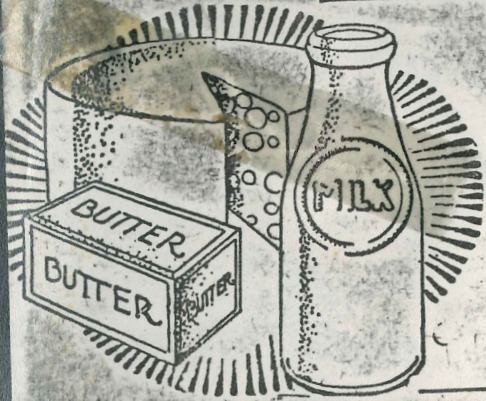
COTTAGE CHEESE  
BUTTER

Milk contains every element of food value in the most delicious form obtainable. For wholesome, rich butter, smooth, flavorsome cheese—and fresh, pure sweet milk Fort Erie Dairy products more than meet every test.

DAILY DELIVERIES

Main Street

Phones 538—539X—539Y



309 MAIN ST.



## FORT ERIE DAIRY

PEACE BRIDGE BRAND  
Dairy Products



538

Fort Erie, Ont., ..... 19.....

Sold to .....

RES. PHONES 444 M  
1158 W

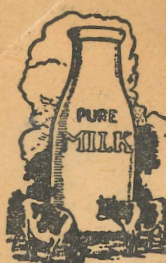
Brought  
Forward

QUARTS		
QUARTS		
PINTS		
½ PINTS		
½ PINTS		
BUTTER		

"THANK YOU" 50 TOTAL



309 MAIN ST.



# FORT ERIE DAIRY

PEACE BRIDGE BRAND

Dairy Products



538

Fort Erie, Ont., .....19.....

Sold to.....

RES. PHONES	444 M 1158 W	Brought Forward		
	QUARTS			
	QUARTS			
	PINTS			
	½ PINTS			
	½ PINTS			
	BUTTER			
"THANK YOU" <b>50</b>		TOTAL		

# FORT ERIE DAIRY

will discontinue Sunday deliveries, beginning October, 1st. SEPT 1944

Our trucks and wagons carry:

Jersey Milk

Homogenized Milk

Serving Metro Niagara Since  
==1931==

Why is Avondale Dairy  
qualified to carry the  
Quality Chekd Label?



Extras earned it for Avondale.  
Extra care. Extra effort. Extra quality.  
You see, the Quality Chekd people are as particular as  
their name implies. They are an international group of more  
than 100 independent dairies dedicated to extra quality.  
And they look for the same dedication in new members. Like  
Avondale.

Avondale has been producing extra quality dairy products  
for 40 years. Testing. Re-testing. Constantly improving. To  
meet their own high standards over and above those of  
government. The dairy thus earned the right to take the final  
tests given by the Quality Chekd Dairy Products Association:  
38 extra "special exams" for everything from cows to  
cartons.

Avondale passed with honors. They'll be undergoing the  
same tests periodically. And submitting samples regularly to  
the Quality Chekd testing laboratories. To insure extra  
quality.



**Avondale**

DAIRY LTD.

APRIL 1973

We buy from 141 local Milk Producers Employing over 150 people with an annual  
wage of over 1.5 million dollars.

FORT ERIE • CRYSTAL BEACH  
• NIAGARA FALLS • WELLAND • PORT COLBORNE  
• ST. CATHARINES • QUEENSTON • ST. DAVIDS

1957

# FORT ERIE DAIRY LTD.

Plant and Office: 309 Main St.

Fort Erie

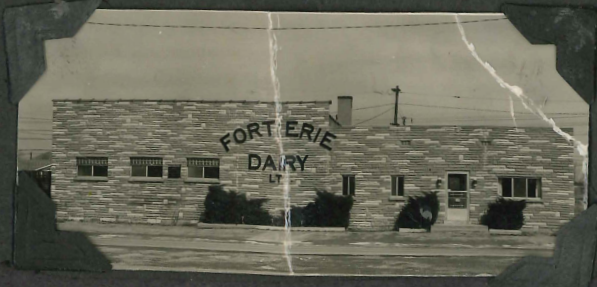


## THE STAFF OF FORT ERIE DAIRY ARE YOUR NEIGHBORS

Local residents with long years of service in the dairy business are represented here: Left to right are—Bill Howie, Jim Barnett, Sam Plato, Leila Green (accounting), Basil Bingleman, Percy Hershy, Alex Alexander, Laverne Seburn, and Ev Holmes, manager. Not shown are: Peter Hudik, Alvin Mehlenbacher and Peter Kallaste in all totalling over 100 years of experience.

### FOR HOME DELIVERY

- PROMPT, RELIABLE SERVICE EVERY DAY  
 PASTEURIZED, STANDARD, HOMOGENIZED AND JERSEY MILK  
 VICO CHOCOLATE, BUTTER, EGGS, COTTAGE CHEESE and  
 TROPICANA ORANGE AND GRAPEFRUIT JUICES BUTTERMILK,



SINCE 1926

# FREE Health Insurance

With our **NEW METAL HOODS**  
that cover the very important pouring lip of the bottle

- Besides (1) Having our milk tested and inspected at all stages of our pasteurizing processes
- (2) Having all stainless steel dairy equipment with acid proof tile flooring
- (3) All **new space-saving bottles**
- (4) Having all insulated trucks

## And Now a Sealed Hood

Covering every surface exposed to contamination by dirt, dust, dogs, cats, flies or anything that touches bottle where your milk may carry it into your glass.

— A sterilized bottle of milk with a contamination-proof hood is the perfect package for your health insurance.

# FORT ERIE DAIRY

FOR QUALITY - SERVICE - SAFETY

PHONE 538

*Jan 13 1955*

1254

# RIDGE DAIRY

## *Homogenized Milk*

### is Miles Ahead

#### *Our Milk is . . . . .*

- Checked regularly by a reliable laboratory insuring use of grade A raw milk.
- Clarified, removing all extraneous matter, including all leucocytes which is very important if the milk is to be homogenized.
- Homogenized at the proper pressure using the new micron-flow valve, giving the milk more viscosity.
- Pasteurized and cooled with the new H.T.S.T. system, locking in its natural flavor and food value.
- Delivered in refrigerated trucks, keeping the milk ice cold until it is set on the doorstep, giving our customers a truly premium milk at the regular price.

Visit our  
**DAIRY BAR**  
FRESH and Nourishing  
**SHAKES, SUNDAES**  
**DIXIE CUPS,**  
**"HOME" SUNDAES**

## RIDGE DAIRY

*Established in 1921*

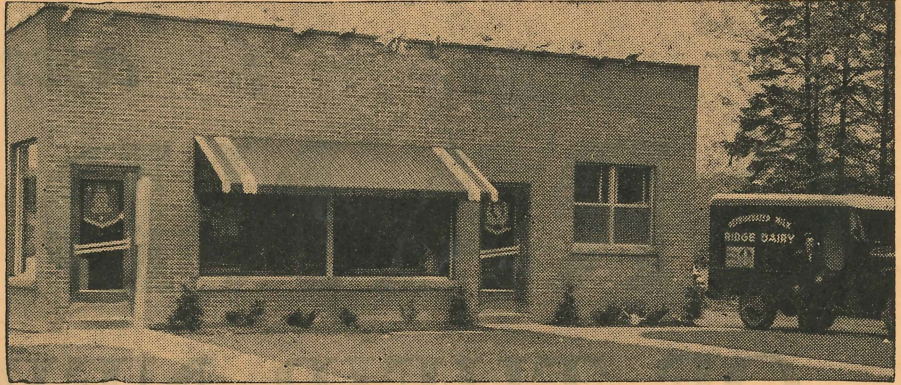
TELEPHONE 15 RIDGEWAY

Open from 9:00 a.m. till 6:00 p.m.

Corner Derby and Rebstock Road  
Crystal Beach, Ont.

# Ridge Milk . . .

## *MILES AHEAD*



THE HOME OF FINEST DAIRY PRODUCTS

*If you are interested in PREMIUM QUALITY and COURTEOUS SERVICE . . .*  
GIVE US A CALL

*Visit our*  
**DAIRY BAR**  
Refreshing and Nourishing  
MILK SHAKES, SUNDAES  
DIXIE CUPS,  
"TAKE HOME" SUNDAES

**RIDGE  
DAIRY**

*Established in 1921*

TELEPHONE 15 RIDGEWAY

Open from 9:00 a.m. till 6:00 p.m.

Corner Derby and Rebstock Road  
Crystal Beach, Ont.

*NOV 54*

# SOUR CREAM

There, is a product that is growing in leaps and bounds over the last few years. We at **Ridge Dairy** have not let this go unnoticed. In fact we have been continually experimenting with this fast growing dairy product and feel that now, we have the best sour cream obtainable — anywhere. So when buying sour cream make sure it's **Ridge Dairy**.





## RIDGE DAIRY NOW SERVES FORT ERIE

The management of Ridge Dairy are pleased to announce that they have purchased the Maple Grove Dairy.

### *Refrigerated Trucks*

carry pure, wholesome dairy products from our modern dairy to customers in the Fort Erie area to give better satisfaction.

If you are not satisfied with the service you have been getting — why not give Ridge Dairy a try?

TELEPHONE **15** RIDGEWAY  
*A Courteous Representative Will Call*

## RIDGE DAIRY

Visit our Dairy Bar at Derby and Rebstock Roads  
CRYSTAL BEACH

53

# RIDGE DAIRY *Homogenized Milk* is Miles Ahead

## *Our Milk is . . . . .*

Checked regularly by a reliable laboratory insuring use of grade A raw milk.

Clarified, removing all extraneous matter, including all leucocytes which is very important if the milk is to be homogenized.

Homogenized at the proper pressure using the new micron-flow valve, giving the milk more viscosity.

Pasteurized and cooled with the new H.T.S.T. system, locking in its natural flavor and food value.

Delivered in refrigerated trucks, keeping the milk ice cold until it is set on the doorstep, giving our customers a truly premium milk at the regular price.

*Visit our*  
**DAIRY BAR**  
Refreshing and Nourishing  
**MILK SHAKES, SUNDAES**  
**DIXIE CUPS,**  
**"TAKE HOME" SUNDAES**

## RIDGE DAIRY

*Established in 1921*

TELEPHONE **15** RIDGEWAY  
Open from 9:00 a.m. till 6:00 p.m.  
Corner Derby and Rebstock Road  
Crystal Beach, Ont.

1954



# RIDGE DAIRY

NOW SERVES

FORT ERIE

The management of Ridge Dairy are pleased to announce that they have purchased the Maple Grove Dairy.



## REFRIGERATED TRUCKS

carry pure, wholesome dairy products from our modern dairy to customers in the Fort Erie area to give better satisfaction.

If you are not satisfied with the service you have been getting — why not give Ridge Dairy a try?

TELEPHONE **15** RIDGEWAY

*A Courteous Representative Will Call*

# RIDGE DAIRY

Visit our Dairy Bar at Derby and Rebstock Roads

CRYSTAL BEACH

1953

WE RECOMMEND

1934

# EVERETT'S DAIRY



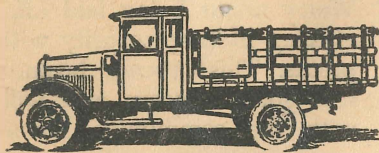
Our Milk Now Being  
Supplied by the  
HOUCK FARMS

Pasteurized  
Milk, Cream, Butter,  
Eggs, Butter Milk,  
Ice Cream and Cottage  
Cheese

Daily Delivery Cover-  
ing the Frontier  
Area

60 JARVIS STREET  
PHONE 54Y

# 35th Anniversary of Fort Erie Dairy Ltd. 1926 to 1961



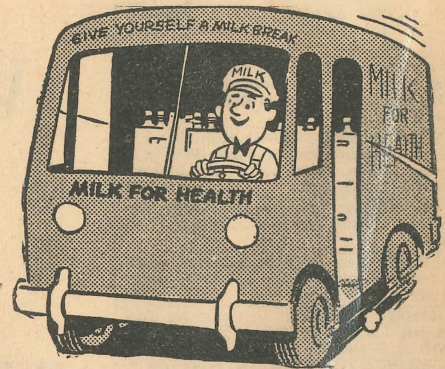
*35 years ago . . .*

**OUR TWO TRUCKS CARRIED ONLY**

- Quarts of Regular Milk
- Half Pints of Whipping Cream
- Butter and Eggs

*In the last 35 years Fort Erie Dairy has grown to a modern equipped dairy with 10 refrigerated trucks carrying many fresh products to you daily.*

*For this expansion we wish to thank you, the good people of Fort Erie and district, and our aim will be to merit your continued patronage.*



*Today . . .*

**OUR 10 REFRIGERATED TRUCKS  
CARRY THESE PRODUCTS DAILY**

- Regular Milk
- Homo Milk
- 2% Milk
- Buttermilk
- Skim Milk
- Whipping Cream
- Table Cream
- Sour Cream
- Vico Chocolate Dairy Drink
- Cottage Cheese
- Creamery Butter
- Sweet Butter
- Orange Juice
- Eggs

## Fort Erie Dairy Ltd.

*Your Local Friendly Dairy*

309 Main Street

Fort Erie

Phone 871-3992